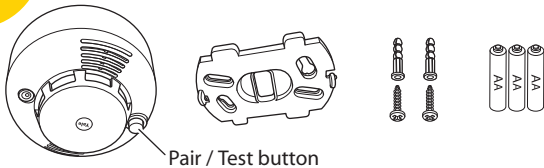


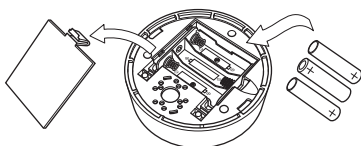
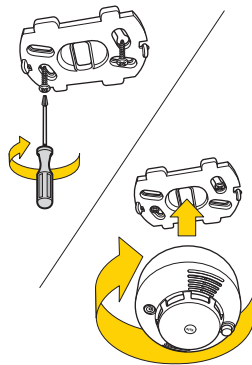
Yale®

(GB) Installation - (IT) Installazione - (DE) Installation - (NO) Installasjon - (SE) Installation - (DK) Installation.



(IT) Associazione/test - (DE) Verbinden/Testen -
(NO) Tilkobling/Test - (SE) Para/Testa - (DK) Tilslut/test

SR-SD



1.5V AAA



(GB) Please see your Yale Smartphone Alarm System Instruction manual for the following: Adding this component to your Alarm, Changing the batteries, Troubleshooting.

(IT) Si prega di consultare il manuale istruzioni dell'allarme Yale Smartphone Alarm per le seguenti operazioni: Aggiungere questo componente al vostro allarme, Installazione, Sostituzione batterie, Risoluzione dei problemi.

(DE) Bitte beachten Sie Ihren Yale Smartphone Alarm-System Bedienungsanleitung für folgende: Das Hinzufügen dieser Tür / Fenster-Detektor, um Ihren Alarm, Installieren, Batteriewechsel, Fehlersuche.

(NO) Vi refererer til den medfølgende brukermanualen av Yale Smartphone Alarm systemet for følgende informasjon: Legge til tilleggsutstyr, Montere enheter, Bytte batterier, Problemløsning.

(SE) För nedanstående hänvisas till Yale Smartphone Alarm system manualen: Lägga till en komponent till ditt larmsystem, Installation, Batteribyte, Felsökning.

(DK) Se hovedmanualen til Yale Smartphone Alarm System, som indeholder vejledning i flg.: tilføj komponenter, installation, batteriskift, fejlfinding.

(GB) Environment - (IT) Ambiente - (DE) Umgebung - (NO) Miljø - (SE) Miljö - (DK) Miljø.



Housings ABS/polycarbonate

(IT) "Involucro di TUTTI i dispositivi ABS/polycarbonato"
(DE) Alle Geräte , Gehäuse ABS Polycarbonat
(NO) ALLE komponenter. Deksel av ABS/polykarbonat
(SE) Alla komponenter Plasthölje ABS/Polycarbonat
(DK) "Alle komponenter ABS/polycarbonat"

-10 °C to 40 °C



70%



RoHS

PACKAGING

An ASSAABLOY Group brand

ASSA ABLOY

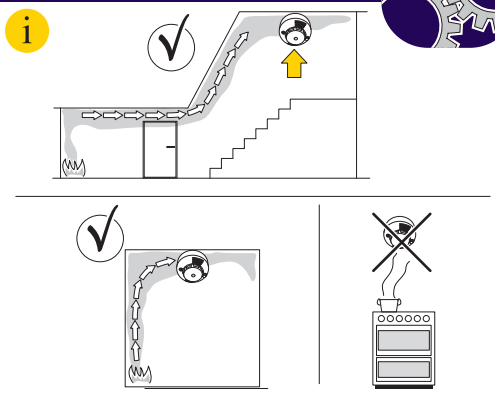
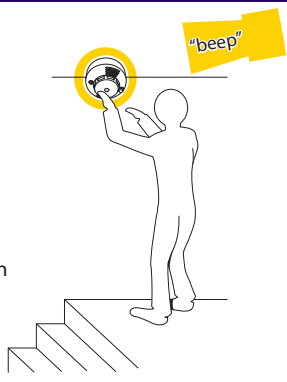
SR-SD-MI-v04



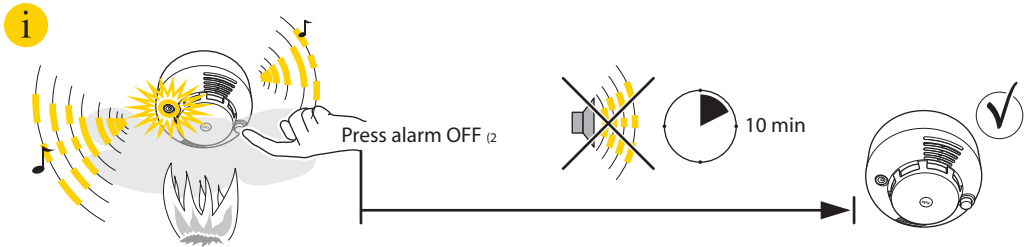
(GB) How does it work - (IT) Come funziona - (DE) Wie es funktioniert -
 (NO) Hvordan virker det - (SE) Hur fungerar det - (DK) Hvordan virker det



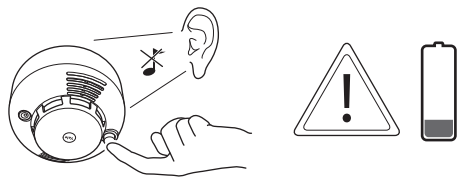
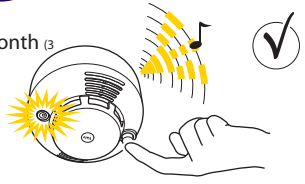
Pair and test planned location for stable radio performance (1)



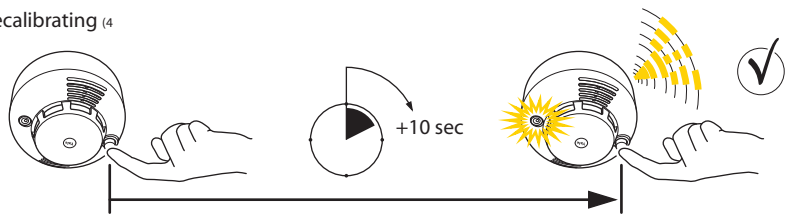
(1) (IT) Associazione nuovo dispositivo. Esegui un test della posizione programmata dei componenti -
 (DE) Verbinden neuer Geräte. Testen Sie Ihren gewählten Standort - (NO) Tilkobling av ekstrastyr.
 Test for stabile trådløse signaler - (SE) Para in nytt tillbehör. Test radiostyrka - (DK) Tilslut ekstrastyr.
 Test for stabil trådløs forbindelse



Testing Every month (3)



Recalibrating (4)



(2) (IT) Premere alarm OFF - (DE) Drücken Sie Alarm AUS - (NO) Deaktiver alarmen - (SE) Tryck alarm av - (DK) Sluk alarm.
 (3) (IT) Test ogni mese - (DE) Jeden Monat Testing - (NO) Test hver måned - (SE) Testa varje månad - (DK) Test hver måned
 (4) (IT) Calibrazione - (DE) Neukalibrierung - (NO) Rekalibrering - (SE) Kalibrering - (DK) Genkalibrering